

THINKPLM

Integrated application Suite for Product Lifecycle Management

think3
Shape a new world.

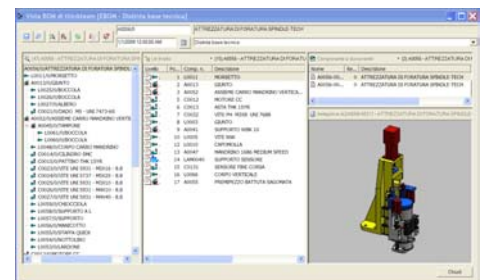


With many years of expertise in Product Lifecycle Management (PLM), think3 offers concrete benefits to small- and mid-sized manufacturers. Think3's PLM is a customer-driven solution, which understands users' needs and offers them tools to address their challenges. ThinkPLM is flexible and modular, easy to install, ready to use and adapts to customer-specific requirements thanks to its quick customization process – leading to real, short to medium term ROI. Companies can seamlessly implement thinkPLM in their Technical Department and expand their solution later, thus immediately realizing its benefits. Adoption and satisfaction are achieved because users can continue to use their existing CAD systems as thinkPLM perfectly integrates with them.

thinkteam

thinkteam excels at managing data for products undergoing constant changes or occasional customizations—products with either long or short lifecycles. These products may have hundreds of versions, each with a separate bill of material (BOM). Thinkteam easily handles queries on product information that would take days to manually and reliably research. For instance, with a given date of manufacture, users can determine which BOM is applicable and view it immediately. Thinkteam manages any kind of information and electronic file, regardless of the authoring tool. It applies access rules and storage strategies, automatically launching the right authoring application for file modification or the viewing application for file visualization. Thinkteam is available in three different versions to meet the requirements of every kind of user within the company:

- *thinkteam document management.* Allows the user to create and manage documents of any kind through classical document management functionalities like Vault management, check-in/checkout, access control, document trees, etc. It comes with standard MS Office integration plug-in. You may add optional editor integrations like AutoCAD, Catia V5 Mechanical Desktop, Pro/ENGINEER, Solid Edge, SolidWorks and ThinkDesign;
- *thinkteam PDM.* Includes all the functionalities of thinkteam document management and allows users to create and manage Bills of Material, adding functionalities such as BOM creation, BOM effectivity management, BOM compare, etc. It enhances editor integrations by automating BOM creation and management, in addition to document trees from within the CAD environment;
- *thinkteam development tools.* Delivers all the tools required to configure graphical workflows, access control rules, database schema and a user interface to tailor thinkteam and other optional thinkPLM applications to customer requirements. Advanced customization tools like the Applications Program Interface (API) and .NET Web Controls library allow users to easily implement complex requirements. The API is an enhanced library/toolkit, which enables users to create custom applications that interact with the thinkteam kernel, while .NET Web Controls allow users to easily create custom web applications for managing thinkteam data.



thinkconfigure

Thinkconfigure ties together ThinkDesign and thinkteam, automating the engineering and design processes for customized and configurable products. This provides manufacturers of engineer-to-order and configure-to-order products an efficient environment for mass customized products. With thinkconfigure, users can select options from a menu, and the system then asks for specifications. After inputs are checked for consistency according to predefined engineering knowledge, the product configurator automatically generates the BOM, the 3D assembly model and 2D drawings for the customized product. Thinkconfigure enables enterprises to deliver Design-to-Order (DTO) solutions. Companies can reduce cycle times, decrease costs, increase quality, and be more responsive to customer demands. The Wizard version provides great ease of use by guiding the user through the various configuration steps. It allows working in an offline mode as well, which is particularly useful when entering configuration data at the customer's site and transferring the data to the company database.

thinkchange

Built for the enterprise, complete ECR/ECO management capabilities track all product changes from creation to completion, alerting all concerned parties by email at each step of the change process.

thinkproject

With product development projects in particular, most if not all the project deliverables may be tracked through digital representations of the products' components. Integrating planning tools, such as MS Project, with tools managing the product information along the complete lifecycle, thinkPLM ensures proper control of the entire planning and execution cycles of a project. Thinkproject for MS Project provides powerful tools to track deliverables progress and gather actual work time within thinkPLM. It ensures smooth integration with MS Project, which is the optimal tool to schedule activities, define constraints, assign resources, and produce project and program reports.

thinkmaintain

thinkmaintain is a Maintenance Management applications allowing the creation of "As Built" configurations for a product. Users can track the evolution, over time, of each single serial number delivered to a client. Functionalities like part replace, add or delete allows users to monitor the evolution of a single product instance when maintenance activities take place. The capability to link documents to part numbers instances, used in a specific product serial number, allows users to document maintenance activities. "As Built" configurations may be created starting from the Engineering BOM or loaded from "As Built" reports produced by an MRP or ERP system.

thinkprint

Thinkprint is a tool for the centralized and automated management of print and plotting processes. It allows users to print lists of documents either by means of a standalone application or directly with think3 and thinkPLM products. Prints are managed by one or more print servers, thus contributing to the optimization of processes, such as the automated distribution to print devices based on the kind and size of documents.

ThinkDesign Viewer

ThinkDesign Viewer is think3's viewing and mark-up solution. Timely communication with the customer and between departments is essential for an effective product lifecycle management. ThinkDesign Viewer allows viewing of documents both in think3 formats and in the most popular standard formats (IGES, STEP, etc.) while making key mark-up tools available for the engineering change communication and request process.

Webteam

Webteam provides web-based access for sharing thinkteam information over the Internet or within Extranets and Intranets. It is an ideal solution for providing access to product information to a larger user community. Part numbers, product structure, BOMs and documents are readily available for viewing with a standard browser. No software client installation is required. CAD files can be automatically published to the webteam server.

System Requirements for thinkPLM suite (thinkteam)

Server

- Microsoft® Windows Server™ 2000 SP4 or Microsoft® Windows Server™ 2003 when supporting more than ten users
- Intel® Pentium® 4
- 1 GB System memory (RAM)
- 1 GB Hard Disk space for typical installation
- Microsoft® Internet Explorer 6.0 SP1
- Database: Microsoft® SQL Server Desktop Engine (MSDE – up to 5 users), SQL Server™ 2000 Standard Edition, SQL Server™ 2000 Enterprise Edition, SQL Server™ 2005 Enterprise Edition, SQL Server™ 2005 Standard Edition, Oracle8i™, Oracle9i™, Oracle10g™ and Oracle Express

Client

- Microsoft® Windows® 2000 Professional SP4 / Microsoft® Windows® XP Professional/Home SP2 or higher, XP Professional x64 Edition and Vista™
- Intel® Pentium® 4
- 256 MB System memory (RAM)
- 200 MB Hard Disk space for typical installation
- Microsoft® Internet Explorer 6.0 SP1 or higher